



ePS Midmarket Print Suite

Mastering Growth: Unleashing the Power of Print MIS/ERP

Automation can maximize your production and minimize your services. Printers are looking to diversify their service offering in order to maintain customer loyalty and stay ahead of the competition. Needing to do more with less is where automation can help take your business to the next level.

Why you need a print MIS/ERP?

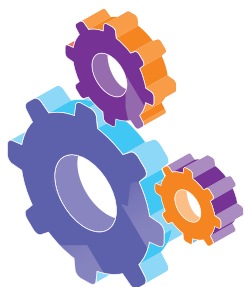
It is no secret that the world of print is changing, and at lightning speed. Customers demand faster turn times, lower prices, and higher quality in products. To stay ahead of the competition, more and more printers are looking to diversify their service offering as traditional print product margins shrink. Printers are looking to diversify their service offering to maintain customer loyalty and to stay ahead of the competition.

This is leading to printers embracing more services like online ordering, digital printing, display graphics, packaging, mailing, and fulfillment to address the changing needs and the evolving print landscape. But is diversifying the end of the story? Absolutely not! A chain is only as strong as its weakest link.

Installing a high- quality, high-production digital printer is only the beginning. Getting a customer request from order submission to shipping relies on more than a printer alone. The many steps involved, if not handled efficiently, can diminish the capabilities of an excellent digital printer. Yielding much lower results can put a strain on your production environment and cost you money. **So, what is the answer?**

You have most likely heard the word “automation” more than a few times. But do you understand what that means in value it can bring to your company? To help you determine if automation is for you, please ask yourself the following questions:

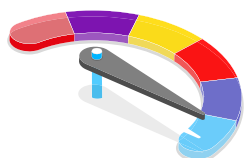
- **Would your workflow benefit if your customer could submit an order request online and the order information didn't require someone to manually input job information directly into your MIS/ERP system?**
- **Would your workflow be streamlined if once a job was accepted, it could be automatically scheduled based on machine and employee availability, pushed downstream, and produced with minimal human intervention?**
- **Would you win more opportunities if your skilled estimator could reduce the time they needed to generate an estimate?**
- **Would your team save time when all your shipping information was processed, tracking numbers seamlessly generated, and your customer notified immediately and automatically?**
- **Would bottlenecks disappear if you could create fewer complex quotes without using your skilled estimator leaving them available for the complex requests?**
- **Would your company's cash flow benefit if you could reduce the number of days between an order being shipped and invoiced?**



Why you Need a Workflow Audit?

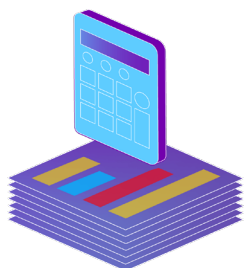
To help identify bottlenecks in your workflow which reduce customer service, slow down order completion, and collecting payment, consider a print workflow audit. Common benefits include:

- **Optimizing system configuration to reduce manual intervention**
- **Workflow improvements that consider changes in the operation since the original implementation**
- **Taking advantage of new product features that you already have access to but may not be aware of**
- **Correction of any bad procedural habits that result in higher quality and staff productivity**
- **Learning about additional modules that can further increase efficiency and provide cost savings**



Highest Priority First

Your print software solution should be intuitive, user friendly and display high priority actions to your users. Your team should be able to easily identify key tasks that require their attention, navigate to them quickly and take immediate action.



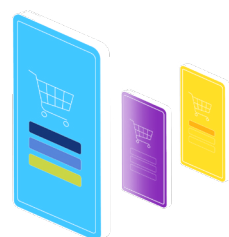
Estimating

Hopefully, your workflow can handle complex estimating requests efficiently and effectively. Your skilled estimators can use the solution to reduce their workload, not create more work. Those less complex estimate requests can be handled by less skilled estimators, salespeople, or customer service representatives.

Web-to-Print

Do you have an online presence? Is it connected to your MIS/ERP system? Providing an online platform to submit orders is an excellent way to retain customers and help automate workflows. Ideally, web-to-print orders should arrive into your MIS/ERP with fully populated job details and require no manual intervention.

Such automation helps allow your team time to provide a superior customer experience versus requiring them to perform monotonous data entry tasks.





Scheduling

Looking for a solution that will effectively assist you in creating the best possible production schedule is key. One that isn't cumbersome or require excessive effort to distribute. Ideally, an option that allows you to evaluate various scenarios quickly. You may need to know:

- **Optimizing system configuration to reduce manual intervention**
- **How does having an employee call in sick affect my production schedule?**
- **How does having a machine suddenly go offline impact on-time delivery?**
- **How can we bring in this urgent customer request and still deliver the rest of our schedule on-time?**

Quickly and easily seeing how unforeseen changes impact your business is essential and allows you to quickly make strategic decisions with confidence.



Shipping

100% of print businesses ship. Everybody ships. A shipping solution that seamlessly communicates with multiple shipping service providers and your MIS/ERP will save you time and money. Ask yourself:

- **How do you manage your shipping workflows?**
- **Is your shipping information automatically shared with your shipping provider?**
- **Are you required to retype addresses into a shipping solution slowing down**
- **workflow and adding data integrity risk?**

A shipping solution that seamlessly communicates with multiple shipping service providers and your MIS/ERP will save you time and money.



What Next?

We all know nothing is perfect, and that definitely is true with any software solution. However, partnering with a company who will walk with you through challenges and issues is essential.

We understand that once you install the software, you have only begun your journey, installation is never the end. Things happen, and systems can have issues. Partnering with a company that will walk with you through challenges and issues is essential. Knowing you are in the hands of a company with a long history of servicing the print industry and committed to your success will lessen your downtime and keep you running profitably.

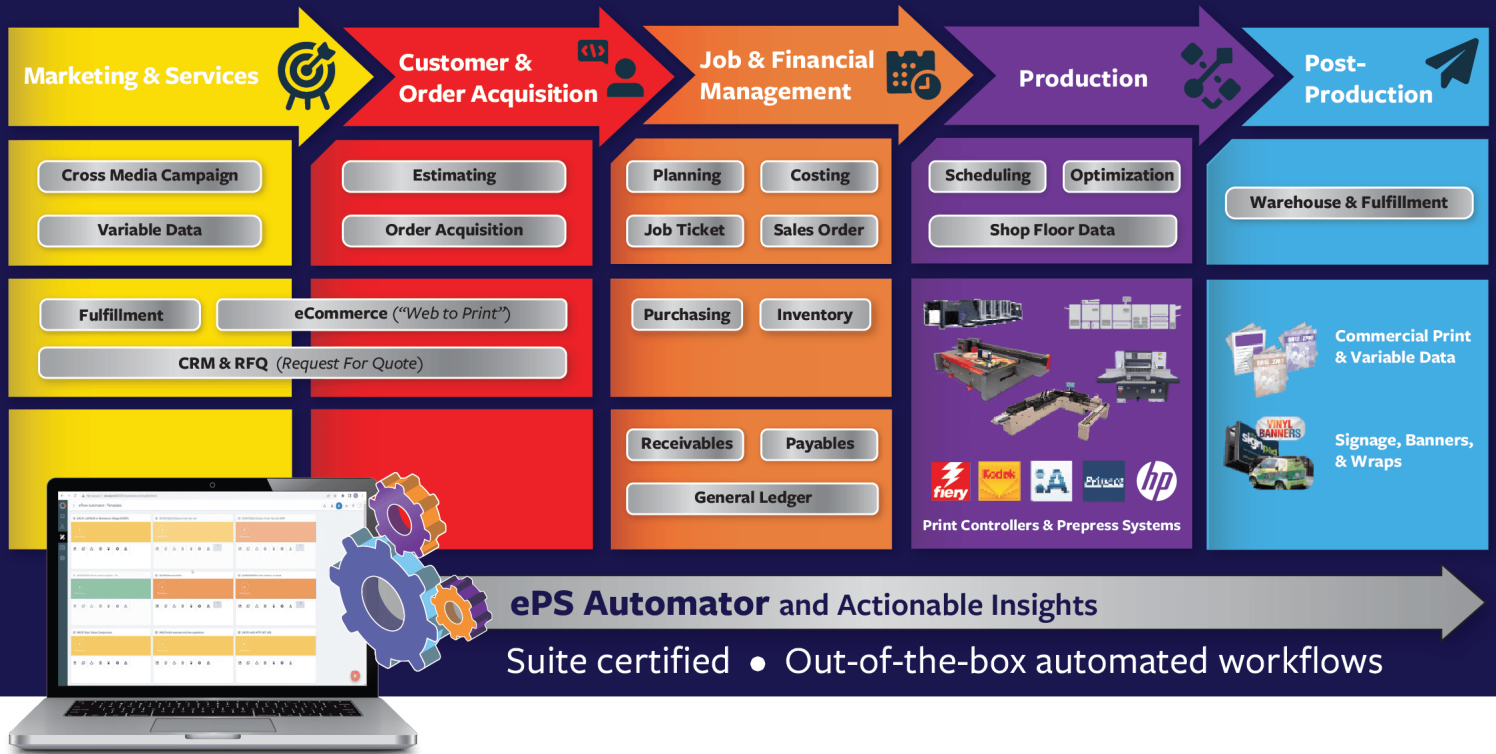
Midmarket Print Suite Ecosystem

The ePS Midmarket Print Suite is crafted to deliver unparalleled workflow automation benefits. Tailored to meet the unique demands of the printing industry, it encompasses comprehensive end-to-end features designed to optimize every facet of your business.

With the Midmarket Print Suite as your software solution, expect a significant reduction in human errors, heightened operational efficiency, and the realization of the coveted "lights out" workflow.

From seamless order capture to efficient shipping and receiving payments, this suite is your strategic ally in reducing throughput time, maximizing profitability, and ensuring customer loyalty. Your business will thrive with a harmonized and streamlined approach, setting new standards for excellence in the print industry.

For more information on how the Midmarket Print Suite can help you improve your print production, please visit **printepsw.com**




eProductivity Software

eProductivity Software is a leading global provider of industry specific business and production software technology for the packaging and print industries. The company's integrated and automated software offerings and point solutions are designed to enable revenue growth and drive operating and production efficiencies. eProductivity Software is headquartered in Pittsburgh, Pennsylvania with offices worldwide. With over thirty years dedicated to delivering best-in-class technology to the packaging and printing industries, it is the company's deep held philosophy that eProductivity Software succeeds when its customers thrive. For more information reach us at contact@epssw.com.

Midmarket Print Suite

Why you need a Print MIS Solution
October 2023 | EN | V2.0

This publication is protected by copyright, and all rights are reserved. No part of it may be reproduced or transmitted in any form or by any means for any purpose without express prior written consent from eProductivity Software. Information in this document is subject to change without notice and does not represent a commitment on the part of eProductivity Software.

Auto-Count, Digital StoreFront, DirectSmile, DSFdesign Studio, PrintFlow, PrintSmith, PrintSmith Site, Printstream, Radius, are trademarks of EPS US, LLC and/or its wholly owned subsidiaries or affiliates in the U.S. and/or certain other countries.
All other terms and product names may be trademarks or registered trademarks of their respective owners, and are hereby acknowledged.